

Series

MS60/MS125/MS250/MS500



**More Reliable. More Efficient.  
More Precise. Machine Synchronized.**



Pulsarlube **MS**

### Features & Advantages

#### Easy & Efficient Maintenance

- ▶ The Pulsarlube MS is engineered to operate in synchronization with the equipment on which it is installed allowing efficient maintenance
- ▶ A pre-set amount of grease is delivered only when the equipment is in operation, avoiding the possibility of over-lubrication and waste
- ▶ The Relay Box can be connected directly to the power cable without additional electrical wires

#### Cost Savings

- ▶ Substantial savings from the use of replaceable grease pouches and battery packs (Service Pack)
- ▶ Perfect solution to prolong machinery life by preventing under or over-lubrication and optimize maintenance efficiency

#### Other Features

- ▶ Various dispensing settings & grease pouch volumes to suit a wide range of industrial applications
- ▶ Easy to adjust dispensing periods, even while in operation
- ▶ Transparent container for easy visual inspection of remaining lubricant

### Typical Industries and Applications



- Motors & pumps
- Equipment that is shut down or in stand-by for long periods of time
- Electronics & automotives
- Cleanrooms where over-lubrication is critically monitored

### Product Specifications

#### Grease Pouch Capacity

60ml / 500ml (pre-set)  
125ml / 250ml (capacity setting available)

#### Power Supply

DC 4.5V Battery Pack (replaceable)  
Standard : Alkaline Battery  
Optional : Lithium Battery  
\*Relay Power Ratings : AC100 ~ 480V

#### Operating Pressure

30 ~ 60bar (435 ~ 870psi)

#### Operating Temperature

Standard Alkaline Battery :  
-15°C ~ 60°C (5°F ~ 140°F)  
Optional Lithium Battery :  
-40°C ~ 60°C (-40°F ~ 140°F)

#### Dispensing Periods

60ml : 1 ~ 12 month  
125ml / 250ml : 1, 2, 3, 6, 12 month & H (15 days)  
500ml : 1, 2, 4, 6, 12, 18, 24 month & H (15 days)

#### Single Point Remote Installation

Max. 10m (33ft) with Ø6 tube

#### Multi-Point Installation

Max. 6m (20ft) with Ø6 tube  
(Up to 8 lube points)

### Relay Specifications



#### Voltage Rate Input Range

AC 100 ~ 480V  
0.5W/50 ~ 60Hz

#### Voltage Rate Output Range

Signal (Open collector type)

#### Power ON Indicator

Red LED

#### Relay Box Dimensions

85mm (D) x 49mm (W) x 32mm (H)

#### Wire Length From Relay Box

Input : 1m (3.3ft) Output : 4.5m (15ft)

#### Wire Length From MS Lubricator

90mm (3.5in)

Series

MSP60/MSP125/MSP250/MSP500



**More Reliable. More Efficient. More Precise.  
Machine Synchronized & Externally Powered.**



Pulsarlube **MSP**

### Features & Advantages

#### Synchronized Lubrication

A pre-set amount of grease is delivered only when the equipment is in operation, avoiding the possibility of over lubrication and waste

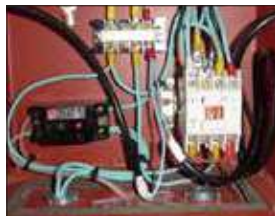
#### Cost Savings

- ▶ There is no need to replace the battery pack for up to 5 years
- ▶ Substantial savings from the use of replaceable grease pouches and battery packs (Service Pack)
- ▶ Perfect solution to prolong machinery life by preventing under or over-lubrication and optimize maintenance efficiency

#### Other Features

- ▶ Various dispensing settings & grease pouch volumes to suit a wide range of industrial applications
- ▶ Easy to adjust dispensing periods, even while in operation
- ▶ Transparent container for easy visual inspection of remaining lubricant

### Typical Industries and Applications



- Motors & pumps
- Equipment that is shut down or in stand-by for long periods of time

- Electronics & automotives
- Cleanrooms where over-lubrication is critically monitored

### Product Specifications

#### Grease Pouch Capacity

60ml / 500ml (pre-set)  
125ml / 250ml (capacity setting available)

#### Power Supply

External Power Supply (\*Backup Battery Required)

- 1) VAC  
AC-DC ADAPTOR (100 ~ 220V)
- 2) VDC  
DC-DC CONVERTOR (12V ~ 24V)

#### Operating Pressure

30 ~ 60bar (435 ~ 870psi)

#### Operating Temperature

Standard Alkaline Battery :  
-15°C ~ 60°C (5°F ~ 140°F)  
Optional Lithium Battery :  
-40°C ~ 60°C (-40°F ~ 140°F)

#### Dispensing Periods

60ml : 1 ~ 12 month  
125ml / 250ml : 1, 2, 3, 6, 12 month & H (15 days)  
500ml : 1, 2, 4, 6, 12, 18, 24 month & H (15 days)

\* MSP is also available for oil applications

#### Single Point Remote Installation

Max. 10m (33ft) with Ø6 tube

#### Multi-Point Installation

Max. 6m (20ft) with Ø6 tube  
(Up to 8 lube points)

#### Dispensing Volume Size

0.34ml/stroke (@20°C/68°F)

### Relay Specifications



#### Voltage Rate Input Range

VAC : 100 ~ 220V, 0.5A 50 ~ 60Hz  
VDC : 12V ~ 24V

#### Voltage Rate Output Range

5.0V, 2A

#### Power ON Indicator

Red LED

#### Power Supply Dimensions

85 mm (D) x 49 mm (W) x 32 mm (H)

#### Wire Length From Power Supply

Input : 1m (3.3ft) Output : 4.5m (15ft)

#### Wire Length From MSP Lubricator

90mm (3.5in)