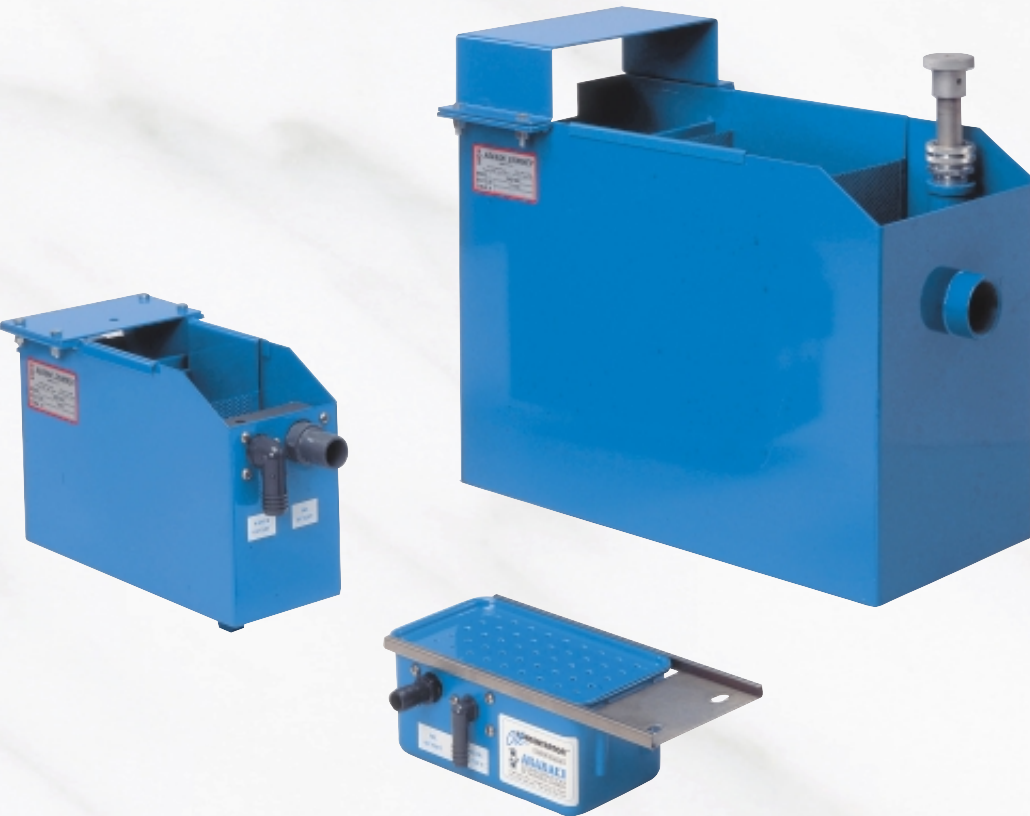


# OIL CONCENTRATOR®



## More Complete Oil/Water Separation

- Slashes disposal costs by providing water-free oil for disposal
- Oil/water separation is virtually complete
- Helps increase the recycle value of skimmed oil
- Saves costly coolant and washing solutions from premature disposal
- Available for all Abanaki oil skimmers

## General Description

The Abanaki Oil Concentrator provides virtually complete oil/water separation for recycling or disposal of either liquid.

Under most operating conditions, Abanaki skimmers pick up oil with only small traces of water. However, as surface oil is reduced to a thin layer (1/16 inch thick or less), more water (or coolant) may be picked up along with the oil. When used in tandem with an oil skimmer, the Oil Concentrator solves this problem by providing final phase separation. The result is water (or coolant) available for recycling, and virtually water-free oil for disposal.

The Oil Concentrator is non-electrical and contains no moving parts — it simply receives liquid directly from the skimmer. Based on the principle of gravity separation, the Concentrator tank is sized so that there is adequate dwell time for the oil and water to separate. Water discharge is through a tube that has an open end near the bottom of the Concentrator, while oil flow is through a separate drain port near the top. As additional liquid enters the Concentrator, water and oil are forced out through their respective discharge tubes and ports. A sludge screen provides additional dwell time for separation while preventing debris from contaminating either the water or the oil.

Installed at the discharge end of the oil skimmer, the Concentrator comes complete with mounting bracket, removable sludge screen and drain plug for easy cleaning. An optional thermostatically controlled heater is available for use with thick oils, or when the application is in freezing temperatures. (A heater should not be used in environments where explosive fumes might be present.)

Abanaki recommends the use of the Concentrator with all oil skimmers. It increases the efficiency of the skimmer and reduces costs associated with oil disposal.

## Oil Concentrator Advantages

- Easy mounting
- Small space requirements
- No skimmer modifications needed
- Needs no electricity, timers, sensors or pumps
- Minimal maintenance
- No moving parts



Typical Oil Concentrator Installation

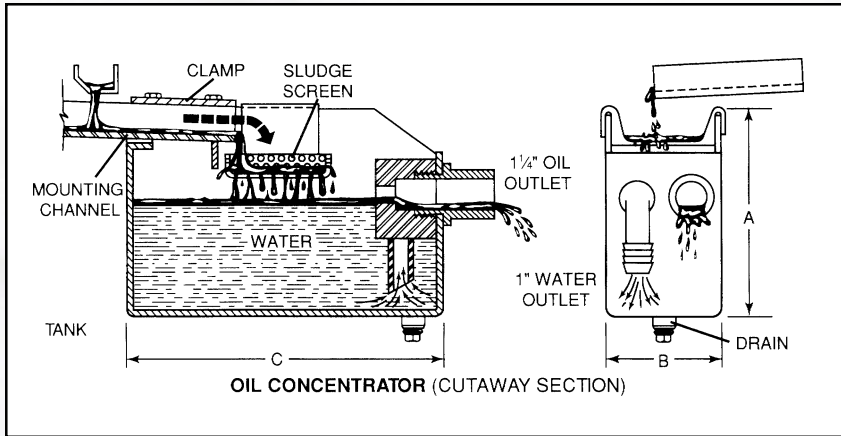


**ABANAKI**  
CORPORATION  
OIL SKIMMER DIVISION

17387 Munn Road • Chagrin Falls, Ohio 44023  
Ph: (440) 543-7400 • FAX: (440) 543-7404  
800-358-SKIM (7546)  
<http://www.abanaki.com>

# OIL CONCENTRATOR®

## Models OC-100/200

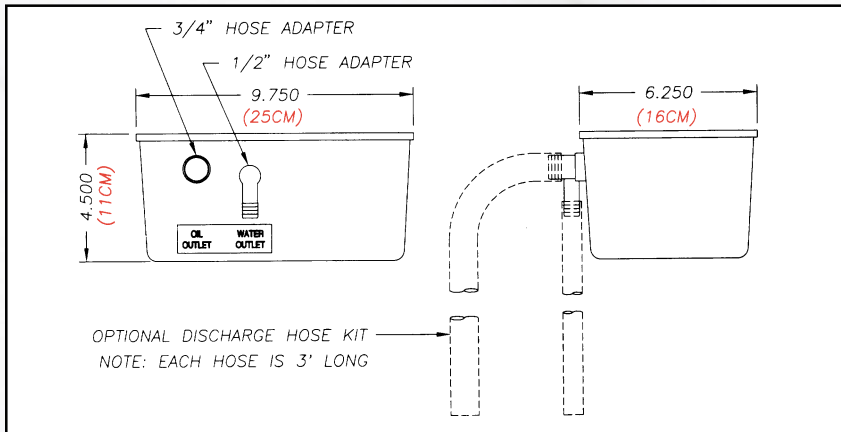


## Dimension, Weights, and Options

OC Model	A	B	C
OC-100	10.00" (254mm)	5.75" (146mm)	15.6" (396mm)
OC-200	18" (457mm)	12" (305mm)	24" (610mm)

OC Model	Weight	Optional Hose Kit	Optional Heater	Used With
DM-100	4 lbs.	YES	NO	Mighty and Tote-It
OC-100	10 lbs.	YES	YES	Models 4 and 8
OC-200	70 lbs.	YES	YES	Multi-Belt Models (MB)

## Model ODM-100



**For more information, please contact:**

## Key Features of Abanaki Oil Concentrators

- Mounts easily on all Abanaki skimmers
- Brackets and hardware supplied by Abanaki
- Corrosion resistant finish
- Sludge screen keeps large debris out of skimmed oil
- Drain plug facilitates routine maintenance
- Optional heater keeps oil flowing in cold environments

## Specifications:

See installation drawings for additional detail.

Concentrator Tank

Applications and Volumes OC-200 for all Multi-Belt units: 17 gallons (64.4 liters).  
OC-100 for Model 8 and Model 4: 2.5 gallons (9.5 liters).  
ODM-100 for Tote-it and Mighty Mini : 0.56 gallons (2.1 liters).

Materials

OC-100 and 200: steel weldments with a corrosion-resistant coating.

ODM-100: fiberglass construction.

Mounting Method

All brackets and hardware supplied by Abanaki — no skimmer modifications required.

Mounting Area and Weights<sup>1</sup>

See installation drawings and tables.

Options (Specify)

Models OC-100 & OC-200:

- Stainless steel construction.
- Thermostatically controlled (500W/110v) heater.
- Discharge hose kits for oil and water outlets (see installation drawing and table).

Model ODM-100:

- Discharge hose kits for oil and water outlets (see installation drawing and table).

Operating Limits<sup>2</sup>

Temperature of liquid: 33°F - 212°F (0.5°C - 100°C).

Carbon Steel units — pH of liquid: 5 - 10.

Fiberglass or Stainless units — pH of liquid: 0 - 13.

Specification Notes:

1. Oil Concentrators are UPS shippable.
2. Consult factory for recommendations covering operating conditions not listed above.

## ABANAKI OIL SKIMMER QUICK SELECTOR CHART

MODEL 8 40gph (151lph)	MODEL 4 20gph (76lph)	MODEL MB 200gph (757lph)	TOTE-IT 12gph (45lph)



**ABANAKI**  
CORPORATION  
OIL SKIMMER DIVISION  
17387 Munn Road • Chagrin Falls, Ohio 44023  
Ph: (440) 543-7400 • FAX: (440) 543-7404  
800-358-SKIM (7546)  
<http://www.abanaki.com>